

[Home](#) ■ [Рішення](#) ■ [Обработка осадка](#) ■ [Обезвоживание](#)

HUBER Solutions for Sludge Dewatering

Mechanical sludge dewatering serves for further reduction of sludge volume and mass by removal of sludge water from interstices between sludge particles. A more or less firm sludge cake is produced.

Prior to its dewatering, fed sludge is first flocculated by addition of polymers. The choice of polymer and its dosage as well as rapid and intensive mixing are decisive for optimal floc formation and dewatering results.

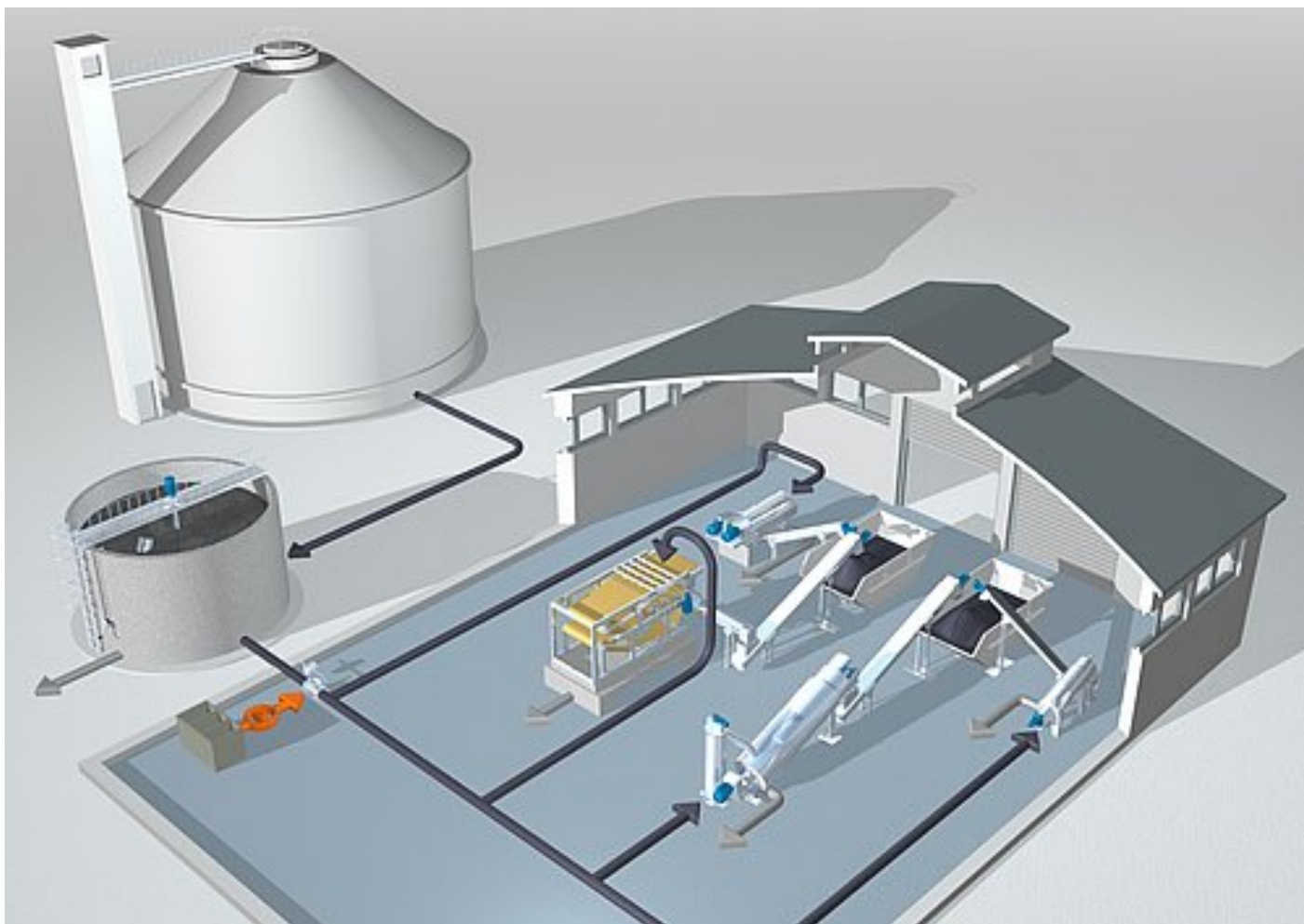
Filtering presses require a sludge that can take pressure and that does not blind the filter medium. Filtering presses are unsusceptible to sand and other mineral solids.

Decanting centrifuges are used if the sludge solids have a considerably higher specific weight than water. However, centrifuges are susceptible to abrasion by sand and other mineral solids.

We supply the following HUBER dewatering machines. They are all made of stainless steel, but differ by their design, size, capacity and performance. We offer the best solution for every application:

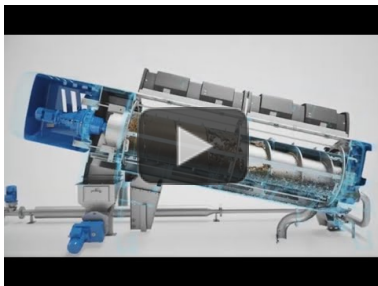
- [Small Screw Presses](#)
- [Large Screw Presses](#)
- [Belt Filter Presses](#)
- [Centrifuges](#)

концепция

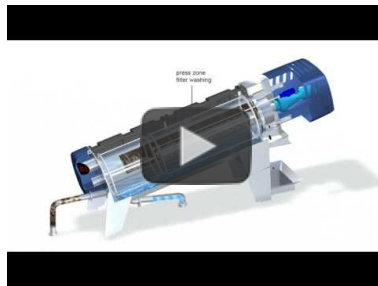


нажмите для увеличения и перехода к интерактивной картинке

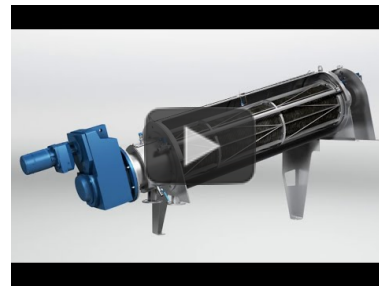
Photos



Animation: HUBER Sludge Dewatering
<https://www.youtube.com/watch?v=2bE1Kb5FApc>



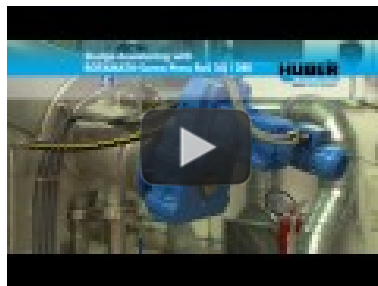
Animation: Function and components of new HUBER Screw Press Q-PRESS@ 620, 800
<https://www.youtube.com/watch?v=t1dSGJYtCk>



Animation: Function and components of HUBER Screw Press Q-PRESS@ 440
https://www.youtube.com/watch?v=n_mnNdQsaCo



Video: HUBER Screw Press Q-PRESS@ - here at a municipal WWTP
<https://www.youtube.com/watch?v=5VsPNKbkJyA>



Video HUBER Screw Press Q-PRESS@ - here in beverage industry
<https://www.youtube.com/watch?v=T5sOUqy-zxk>

примеры из практики

- HUBER Screw Press Q-PRESS@ with world premieres at STP Sargans
- Sludge dewatering in a confectionery at Mondelez, Marlbrook
- Sludge dewatering with the HUBER Screw Press Q-PRESS@
- Dynamic inline mixer for optimized sludge dewatering
- Q-PRESS@ – The new HUBER Screw Press

- [Screw Press replaces centrifuge: Successful operation of a HUBER Screw Press RoS3Q 440 on WWTP Gleißfeld](#)
- [Sludge Dewatering in a UK Creamery: A case study at Premier Food Ambrosia Creamery, Lifton / UK](#)
- [Cost-efficient, low wear: HUBER ROTAMAT® Screw Press RoS 3Q in Finland](#)

Обладнання

- [HUBER Шнековий прес S-PRESS®](#)
- [HUBER Шнековий прес для зневоднення осаду Q-PRESS®](#)
- [HUBER Стрічковий прес B-PRESS](#)
- [HUBER Шнековий конвеєр Ro8 / Ro8 T](#)

Biuro Handlowe: ul. Ryżowa 51, 02-495 Warszawa, tel. + 48 22 572-28-60; fax + 48 22 572 28 68
Serwis: ul. Ryżowa 51, 02-495 Warszawa, tel. + 48 22 572-28-60; fax + 48 22 572 28 98
KRS: 0000132940 Organ rejestrowy: Sąd Rej. dla m.st. W-wy w Warszawie, XIII Wydział Gospod. KRS

NIP 521-009-28-15
KRS 0000132940
Kapitał zakładowy 500.000 zł

Member of the HUBER group:
www.huber.de