

[Home](#) ■ [Produkty](#) ■ [Kraty, sita i sita gęste](#) ■ [Kraty schodkowe STEP SCREEN®](#) ■
[HUBER Krata schodkowa STEP SCREEN® SSF](#)

HUBER Krata schodkowa STEP SCREEN® SSF



The suitable machine for any application due to variable installation angle

- for high separation efficiencies
- for any flow rate
- with optional lifting of screenings at bottom level

The variable installation angle ensures:

- optimal adjustment to individual hydraulic conditions, such as limited upstream levels due to preceding pumping stations
- operating reliability due to tailor-made layout

The STEP SCREEN® System is widely accepted and successful due to its function and easy-to-follow operation principle as well as the simple cleaning method without any aids (self-cleaning effect according to the counter-current principle). It is furthermore easy to maintain and able to handle extremely big screenings volumes whilst it also offers a high operational reliability.

The motor linkage drive has been developed from the well-proven and patented link system. To the benefit of our customers we intentionally avoided difficult-to-maintain chain drives. With the new linkage type we are able to master the occurring bending moments on the lamellae, especially with high water levels.

Korzyści

BENEFITS OF STEP SCREEN® FLEXIBLE SSF:

- **Functional principle:**
 - Lifting of screenings at bottom level due to a special bottom step design
 - Gentle and complete screenings transport due to the counter-current principle
- **Retrofitting / new plants:**
 - Optimally adjustable to individual hydraulic conditions due to the variable installation angle
- **Flow rate:**
 - High capacity; the flow passes the screen surface only once
- **Separation efficiency:**
 - High separation efficiency due to the narrow slot width and the produced screenings carpet
- **Cleaning:**
 - Self-cleaning effect due to moveable lamellae (no spray water, no brushes)
- **Operational stability:**
 - Reduced susceptibility to grit, gravel and stones due to the bottom step washing system
- **Pivoted screen:**
 - Without the need to remove the subsequent wash press or transport unit
- **Protection against corrosion:**
 - Manufactured from stainless steel and acidtreated in a pickling bath
- **Experience:**
 - Unrivalled for more than 20 years

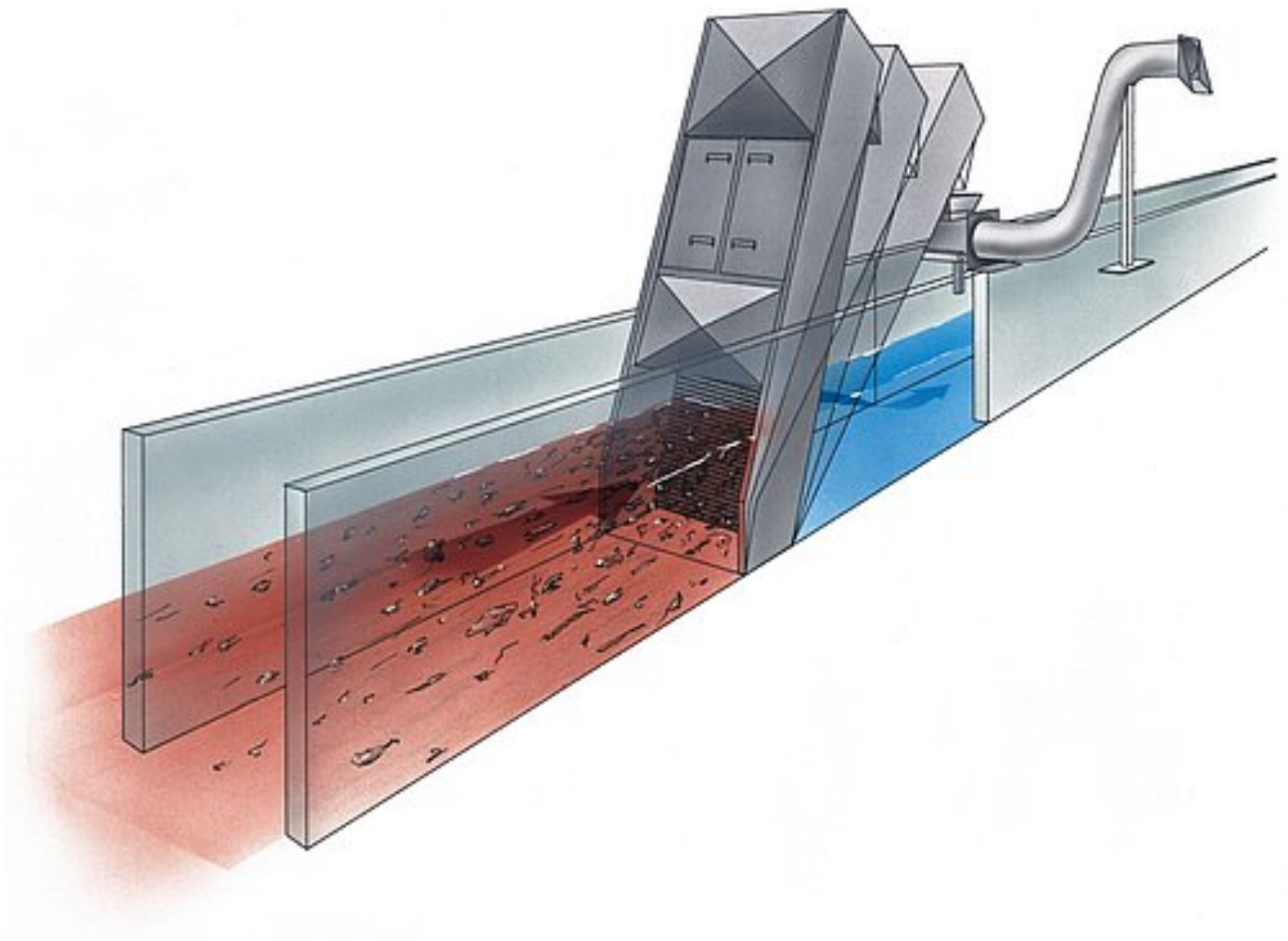
Do pobrania

 [Brochure: STEP SCREEN® Flexible SSF](#) [pdf, 398 KB]

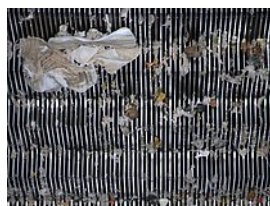
Przykłady wdrożeń

- [HUBER supplies the machines for the mechanical treatment stage of the worlds' largest wastewater treatment plant project](#)

Rysunek schematyczny



Zdjęcia



Inne produkty z tej grupy Kraty schodkowe STEP SCREEN®

- [HUBER Krata schodkowa STEP SCREEN® SSV](#)

Biuro Handlowe: ul. Ryżowa 51, 02-495 Warszawa, tel. + 48 22 572-28-60; fax + 48 22 572 28 68
Serwis: ul. Ryżowa 51, 02-495 Warszawa, tel. + 48 22 572-28-60; fax + 48 22 572 28 98
KRS: 0000132940 Organ rejestrowy: Sąd Rej. dla m.st. W-wy w Warszawie, XIII Wydział Gospod. KRS

NIP 521-009-28-15
KRS 0000132940
Kapitał zakładowy 500.000 zł

Member of the HUBER group:
www.huber.de
